

SpiritFlex Tension System

SpiritLITE 165-STD

- Low-profile internally illuminated flexface lightbox
- 165mm deep accommodates fluorescent tubes or LED's¹
- Indoor or outdoor use
- Easy to assemble for self-build or as completed boxes

SALES CONTACTS:

Call or email to find your nearest SpiritFlex stockist.

UK : +44 20 8330 9486

South Africa : +27 11 454 4203

email: info@spirit-displays.com

Material:

Aluminium
6063 T6

Dimensions:

Width : 40mm
Height : 165mm
Length : 3060mm

Finish:

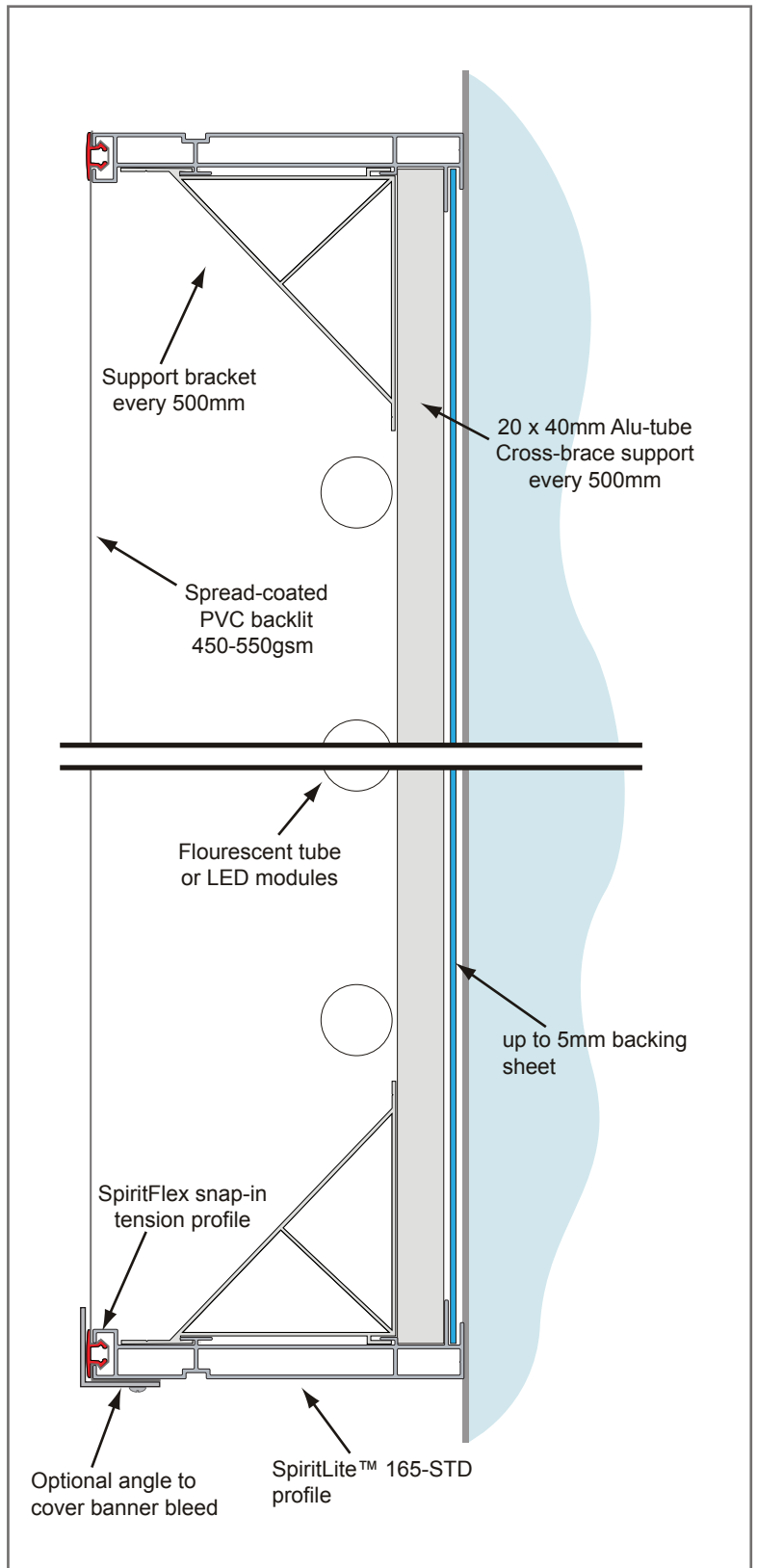
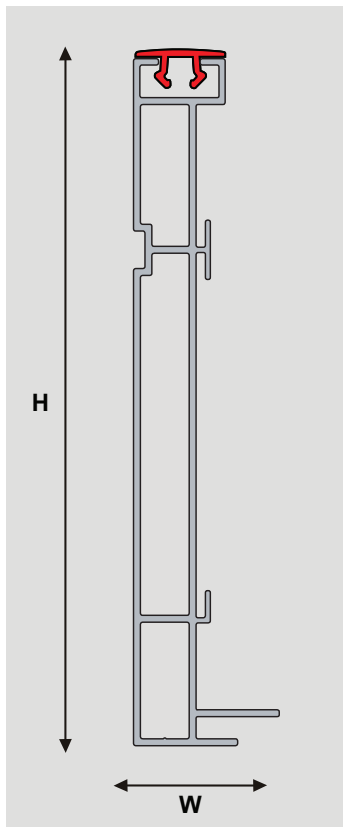
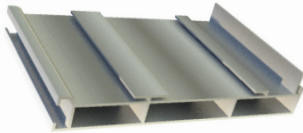
Mill
Other finishes available, subject to quantity.

Specials:

For details of ordering specials, please contact your representative

Compatible parts:

Snap-in tension profile



Spirit Displays Limited
Unit 4 - 193 Garth Road
Morden, Surrey
SM4 4LZ

Copyright 2008 Spirit Displays



¹ Please ensure SpiritFlex is a suitable solution for the specific application, the site and other local conditions.
² For further information, refer to our list of materials which we have evaluated for use with SpiritFlex.